

Fixed Cassette Toilet

User Manual

Factory Instructions



Read carefully before use. Keep for future reference

Safety Information

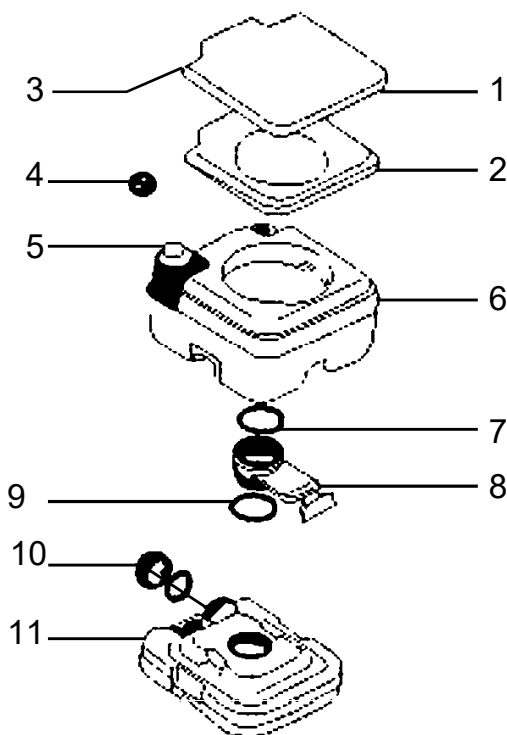
⚠ Warning!

- **DO NOT** use this toilet on inclined or uneven ground.
- **DO NOT** use this toilet if it is damaged or malfunctions. Repair or replace worn or broken parts before further use.
- **ALWAYS** use the seat when sitting on this toilet. Sitting off-center or directly on the edge of the flush tank may cause damage or personal injury.
- **DO NOT** stand on this toilet at any time.
- **DO NOT** lean on the backrest of this toilet.
- **DO NOT** place more than 150 kg (330 lb.) on this toilet at any one time.
- **DO NOT** leave the cassette door open.

Specifications

Overall Dimensions	48×40×32 cm Approx.	18.8×15.7×12.5 in.
Seat Inner Diameter	25.5×22 cm	10×8.7 in.
Clean Tank Volume	12 L approx.	3.17 gal.
Waste Tank Volume	12 L approx.	3.17 gal.
Weight Capacity	150 kg	330 lb.
Net Weight	8.7 kg	19.2 lb.

Product Diagram



No.	Name
1	Seat Cover
2	Seat
3	Hinge
4	Water Tank Cap
5	Flush Button
6	Flush Tank (Bowl)
7	O-Ring
8	Slide Valve
9	O-Ring
10	Outlet Cap
11	Waste Tank (Cassette)

Assembly Instruction

1. **Positioning:** Place the BlackMOA™ toilet on a firm and level surface to ensure stability and proper function.
2. **Securing:** Fix the toilet securely to the surface using four screws. This ensures the toilet remains stationary during use or travel.
3. **Adjusting:**
 - If needed, remove the four screws on each side of the casing to detach the seat.
 - Fix the toilet to the surface, ensuring it is firmly in place. Screw the bottom to the floor.
 - Reattach the toilet seat by securing it back into the casing with the screws removed earlier.

Operation

1. Remove the water storage cap and fill it with clean water. **DO NOT** exceed the “Max. Water Level” line. Replace the cap, screwing it into place.
2. Open the slide valve by pulling the rod at the back of the waste tank.
3. Use the toilet in standard fashion.
4. Press the flush button as many times as needed to rinse the bowl.
5. Close the slide valve by pushing its rod back in.
6. When sliding the cassette back in after emptying its content at designated place, make sure it is docked properly

Maintenance

Emptying the Waste Tank

The waste tank should be emptied when waste accumulates to about 2 cm (0.8 in.) below the slide valve.

1. Close the slide valve completely by pushing its rod in.
2. Remove the waste water cassette by opening the front door.
3. If using vent, unplug the vent hose and put a cap on vent, and Slide the cassette out from front.
4. Carry the waste water cassette to a designated location for a safe disposal site for human
Unscrew its outlet cap and pour out accumulated waste into the facility.
5. Rinse the waste water cassette with clean water. Pour out this water into the same disposal facility as in Step 4.
6. Put back on the outlet cap of the waste tank, screwing it into place.
7. Slide the waste water cassette back into the casing and close the front door. Make sure the cassette is docked properly to avoid seal damage. Close the front door, the cassette will get fixed with the toilet seat and will be locked and sealed.
8. **DO NOT** leave the door open.

Exterior Cleaning

- Periodically clean the exterior surfaces of the toilet using water and a mild detergent.
- Avoid using abrasive cleaners or caustic chemicals that can damage the surface.
- Rinse and dry the cleaned surfaces thoroughly.

Toilet Bowl Cleaning

- Open the slide valve to access the toilet bowl.
- Use any standard toilet cleaner and a toilet brush to clean all surfaces inside the bowl.
- Rinse the bowl by pressing the flush button, ensuring all cleaner residue is removed.
- After cleaning, empty the waste tank as previously described.

Inspection

- Regularly check all parts of the toilet for signs of looseness, wear, or damage.
- Tighten any loose parts and repair or replace any damaged components before further use to ensure optimal performance and safety.



BLACKMOA-BMCT12

BlackMOA™ - Fixed Cassette Toilet
Proudly Designed in New Zealand

www.mystenterprise.com | info@mystenterprise.com | +64 27 945 6289