



CASSETTE

TOILETE

Product Information Pack

BlackMOA™ Fixed Toilet Seat with Removable Cassette

Brand: BlackMOA™

Designed in: New Zealand

Trademark Country: New Zealand

Brand Ownership: *Myst* Enterprise Ltd.

Copy Rights & Patent Rights:

Myst Enterprise Ltd.



Myst Enterprise

01



SMART - LIGHT - COMPLIANCE. Size, Capacity & Material.

Size*: The BlackMOA™ Cassette Toilet stands alone globally, boasting a unique size and an array of features tailored specifically for Kiwi campervan owners and businesses. This bespoke solution provides substantial savings on costs and space required for modifications, making it the perfect choice for optimizing campervan layouts.

#	Height	Width	Depth
1	320	400	470

**Important: Highly Recommended by the manufacturers and Local Fitters to please adjust your vehicle with a tolerance of 5-10mm on each dimensional length proposed on this document.*

Capacity: This toilet is small but big enough to accommodate 4-passenger vans for compliance. Because it has.

#	Toilet Water Tank	Waste Water Tank	Bearing Limit
1	12 Liters	12 Liters	Min. 150kg

Material: HDPE, Galvanised Steel.

Product Weight: Approx 8.7kg

02

UNIQUE **FEATURES** WITH DISTINCTIVE DESIGN TAILORED FOR NZ'S MARKET NEED.

Adjustable Vent

The toilet's cassette is equipped with a versatile 12mm vent, which can be adjusted to any size up to 4mm. It features a pressure ball at the end of the inner node that opens the vent when a certain pressure builds up in the waste tank, while blocking large particles from entering the vent hose.

Flexible Hose

Included is an opaque, flexible irrigation hose, measuring 2 to 3 meters in length. It is designed to twist and turn in any direction, facilitating easy setup and use

Sturdy Fixed Toilet

This fixed toilet is integrated into a robust structure that includes a Toilet water tank (toilet tank) and a middle layer separating it from the waste tank (blackwater cassette). The entire assembly is encased within an outer wall and a bottom layer that can be securely screwed into a wooden floor, plywood or mounted on rails beneath storage or bedding units, making it ideal for campervan installations.

Multipurpose Vent Cap

The vent cap can be used to seal the vent pipe during transport of the waste tank or when the vent hose is not in use, ensuring a leak-proof closure

Inner Ramp Mechanism

A sliding ramp at the bottom, within the cassette's housing, inclines from 0 degrees at the front to approximately 10 degrees at the back. This design helps lift the rear end of the cassette as it slides into place, ensuring it clips securely into the fixed toilet unit when the front lid is closed.

Water Flush System

The BlackMOA™ Fixed Toilet-12L offers a standard flush like in a porta-loo toilet seat, to efficiently flush down the clean water (toilet tank water) into the waste tank (blackwater cassette) via simple Press/Push button at the rear corner of the toilet.

Non-Electric Design

The BlackMOA™ Fixed Toilet-12L operates without electricity, free from electronic controls, wiring, or electrical components, enhancing its reliability and suitability for off-grid applications.

Removable Cassette

For convenience, the BlackMOA™ Fixed Toilet-12L features a removable cassette that can easily slide in and out from the front, avoiding the cumbersome process typically associated with rear access.

Protective Cassette Door Wall

The front wall of the toilet not only enhances its aesthetic appeal by shielding the cassette, latch, and tank from impacts but also locks the cassette into place when closed. It is supported by durable galvanized steel brackets with a pull mechanism.

Waste Tank Lid

The waste tank has an 80mm lid to keep it always closed and empty the tank with ample space.

Middle Sealant Latch

This latch facilitates easy access to the waste tank from the toilet seat, allowing for simple opening and secure resealing after use.

Efficient Middle Layer

The BlackMOA™ toilet's seat has been designed in a particular way to save unnecessary space and vacuum. The middle layer, which is part of the fixed toilet seat, is about 10mm thick and connects the clear water tank and outer walls by proven industrial methods.



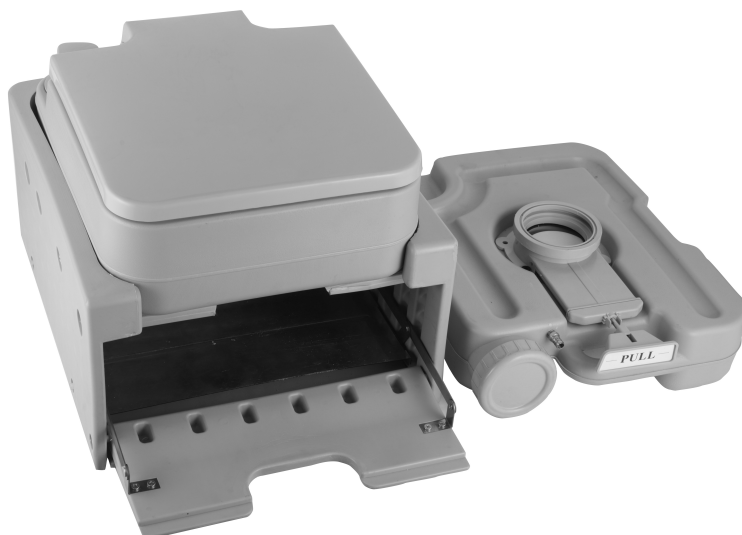
Bottom Floor Layer

The BlackMOA™ Cassette Toilet's bottom cabinet includes designated screwing spots for securing the toilet to the floor or any solid surface, ensuring stability.



Unlimited Water Supply

An optional valve is available that matches the clean water tank's lid size. It can be attached for accessing an unlimited water supply, ideal for use not only in campervans but also in





FREQUENTLY ASKED QUESTIONS - FAQS.

What makes this toilet comply with NZ regulations?

A: New Zealand regulations stipulate that a toilet within a self-contained campervan must be fixed, include venting options, and have a removable waste cassette.

The BlackMOA™ Cassette Toilet meets these requirements as it is securely installed within the campervan, features adjustable venting options, and comes equipped with a removable cassette for easy waste disposal.

These features ensure full compliance with New Zealand's self-containment standards for campervans.



How is The BlackMOA™ Cassette Toilet the most cost-effective fixed toilet compared to all other new and old toilets in the New Zealand market?

Small Case Study: The New Zealand market offers various removable cassette toilets ranging from NZD 500 to NZD 1200. A notably cheaper model sells for about NZD 400, but it stands at 430 to 450 cm high and includes cumbersome features that compromise user comfort and do not comply with the four-person standard.

The Real Cost Challenge: The significant expense lies in the modifications required to accommodate most available models. Here's what we've learned from discussions with over 50 campervan owners and companies:

1. Height Constraints Lead to High Costs:

- o Most models force van modifications to elevate bedding and seating, costing between NZD 2000 and NZD 6000 per modification due to increased structural changes needed for taller toilets.
- o These changes reduce the inner space of the van significantly, affecting the comfort and accessibility of the living area.

2. Subsequent Modifications and Costs:

- a. Additional costs of NZD 8000 to NZD 10,000 may be required for installing higher roofs to accommodate taller toilets, leading to a cascade of further modifications and expenses.

3. Impact on Mental Well-being:

- a. Cramped living spaces can contribute to feelings of depression and anxiety, turning the campervan from a leisure vehicle into a source of stress.

Why Choose The BlackMOA™ Cassette Toilet?

A: The BlackMOA™ Toilets offers a stark contrast in terms of installation flexibility, cost, and user comfort:

1. Minimal Installation Impact:

- At only 320mm high, it fits easily without requiring significant alterations to the campervan's structure.

- Installation can be as simple as attaching it to the floor or integrating it on a sliding rail beneath a bed or seat, with minimal cost and disruption.

2. Economical Modification Costs:

- A DIY setup might only cost between NZD 50 to NZD 80.
- Professional installation estimates for adjustments to the van's structure range from NZD 250 to NZD 450, significantly lower than modifications required for other models.

3. No Long-Term Drawbacks:

- The design and functionality prevent future issues, with features like optional venting and connections for an unlimited water supply adding to its versatility without introducing new problems.

4. Enhanced Mental Comfort:

- Its unobtrusive design and cost-effective installation options help maintain the spaciousness and comfort of the campervan, contributing to a more enjoyable and stress-free environment.

5. Affordable Maintenance and Upgrades:

- Additional parts and accessories are cost-effective, ensuring maintenance or upgrades remain manageable.

Conclusion: The BlackMOA™ Cassette Toilet stands out as the most reliable, cost-effective, and user-friendly option for self-contained campervans, balancing compliance, comfort, and cost like no other product in the New Zealand market.

If we Purchase the BlackMOA™ Cassette Toilet seat, can you assist with installation?

A: Absolutely! We partner with a network of trusted and reputable manufacturers and repairers who are well-equipped to handle the installation of The BlackMOA™ Cassette Toilet. They can also assist with any necessary modifications to ensure a perfect fit in your campervan. Relying on these experienced professionals will not only ensure a high-quality installation but can also help you save significantly on installation costs.

4: What are the other requirements for self-contained campervan toilets in New Zealand?

A: New Zealand's standards for self-contained vehicles are designed to ensure that all installations are sanitary and safe. According to the Ministry of Business, Innovation and Employment (MBIE) website, the key requirements are:

- **Freshwater Tank:** Must hold at least 4 liters per person per day, sufficient for no less than three days.
- **Sink:** Must be connected via a smell trap or water trap to a watertight sealed wastewater tank.
- **Grey/Black Wastewater Tank:** Should have a capacity of at least 4 liters per person per day, with a minimum total capacity of 12 liters. Tanks must be vented and monitored if their capacity is less than that of the freshwater tank.
- **Evacuation Hose:** Must be 3 meters long for fitted tanks, or sufficiently long to connect to a sealed portable tank.
- **Sealable Refuse Container:** A rubbish bin equipped with a lid.
- **Toilet (Portable or Fixed):** Minimum capacity of 1 liter per person per day, with at least 3 liters of net holding tank capacity per person.

These standards are intended to maintain a high level of hygiene and functionality within self-contained vehicles.

What is the difference between a Previous Portable toilet and a fixed toilet?

A: While the terms can sometimes be used interchangeably, there is a key distinction:

- **Cassette Toilet:** This type of toilet is considered a fixed toilet due to its design, which allows it to be securely mounted on the floor or another solid platform within the campervan. It features a removable waste cassette that can be detached for easy waste disposal while the main unit remains fixed in place.
- **Portable Toilet:** Unlike a cassette or fixed toilet, a portable toilet is entirely mobile and not mounted to any part of the campervan. It can be moved around as needed. When its waste tank needs to be emptied, the entire toilet is typically moved, reflecting its fully portable nature.

Cassette toilets provide the convenience of a portable waste system with the stability and permanence of a fixed installation, making them ideal for campervans

6: How to order a BlackMOA™ Cassette Toilet? Are there any discounts?

A: Ordering your BlackMOA™ Cassette Toilet is straightforward:

- **Online:** Visit our website at www.mystenterprise.com and place your order directly.
- **Email or Phone:** You can also order by sending an email or calling us at the contact details provided on our website.

Discounts:

- **Pre-Booking Savings:** Enjoy a 10% discount when you pre-book your toilet.
- **Loyalty Discounts:** Registered clients receive additional discounts on a wide range of products including foam mattresses, covers, TVs, fridges, plywood, curtains, parts, and tools, as well as hygiene and cleaning products.

These incentives are designed to provide value to our customers and enhance their purchasing experience.

7: Are there any spare parts available for The BlackMOA™ Cassette Toilet?

A: Absolutely! We keep a stock of frequently used parts to ensure you can easily maintain and repair your toilet. Available parts include hoses, vent pipes, cassettes, cassette lids, vent pipe caps, water tank caps, and more. These parts are offered at economical prices, making maintenance both convenient and affordable.

Time-Line

Prebooking

The Pre-booking continues. We have received enormous response from our market. We plan to have the container load deliveries here by Late August.

Order Now at info@mystenterprise.com

01	02	03	04	05
06	07	08	09	10
11	12	13	14	15
16	17	18	19	20
21	22	23	24	25
26	27	28	29	30



BOOK ADVANCE



Myst Enterprise

Mid August.

**BULK ORDERS
RECEIVE DISCOUNTS
ON ALL OUR
PRODUCT LINES.**

UP-grading your Fleet has never been easier and less expensive.

This includes fridges, Mattresses, Curtains etc. Get in touch to learn more about bulk deals.

CONTACT US

Myst HQ Office at:

<https://www.mystenterprise.com>

+64 27 945 6289

info@mystenterprise.com

